



Griffco Valve Inc.
 6010 N. Bailey Ave, Ste 1B
 Amherst, NY 14226
 Phone: 1 716 835-0891
 Fax: 1 716 835-0893

HIGH FLOW SERIES PRESSURE RELIEF VALVES



Features:

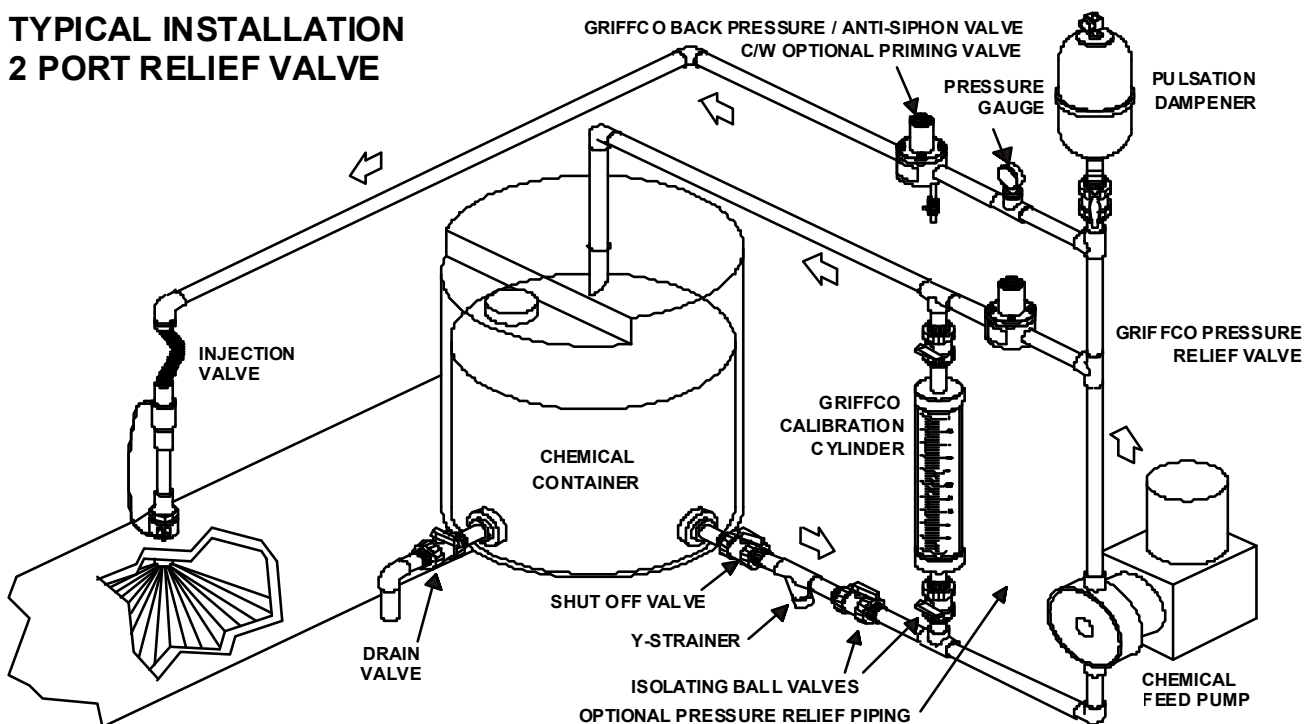
- High Reliability / Low Cost
- Large Orifice for High Viscosity Fluids
- Higher Flow / Lower Pressure Drop
- Adjustable 1 – 10 Bar
- Ventable to Suction Line
- 2 Port Design
- Vulcanised PTFE/EPDM Diaphragm
- Wide Range of Materials
- ISO 9001 Certified

Operation:

Griffco diaphragm pressure relief valves operate when the pressure in a chemical line exceeds the pre-set pressure of the valve. The diaphragm is held against the valve seat by an internal spring. When the pre-set pressure is exceeded the diaphragm is forced up and the chemical flows out the relief port, back to the chemical tank or to the suction side of the pump. The valves are pre-set at 3.5 bar, however they are field adjustable from 1 – 10 bar via the adjustment screw. The relief valve should be set approximately 1 bar higher than the system pressure. Installation should be made as close to the pump as possible, without any valves or accessories between the relief valve and the pump. Consult your pump manufacturer for his recommendations.

Griffco high flow diaphragm pressure relief valves are designed to protect chemical transfer systems from over pressure damage caused by defective equipment or a blockage in the chemical line. Large orifice sizes facilitate high flows and high viscosity. Wetted materials include **PVC, CPVC, PP, PVDF, PTFE, 316SS, A20 and Hast. C.** Available sizes: DN 15, DN 20 and DN25.

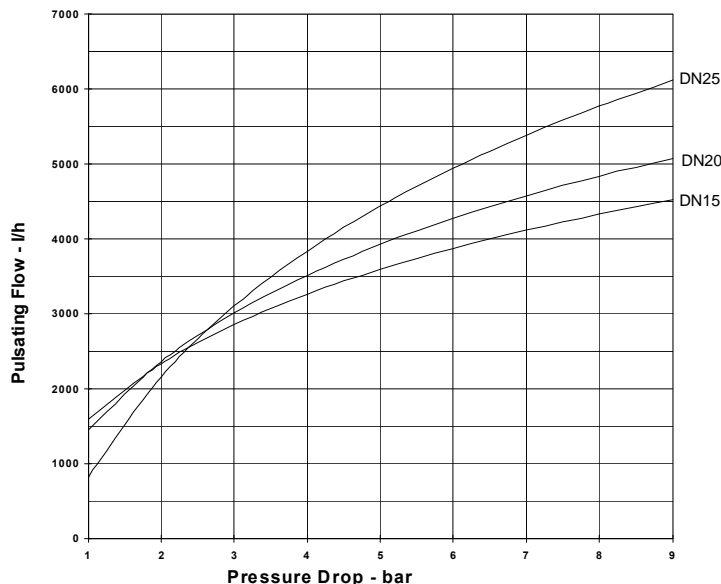
TYPICAL INSTALLATION 2 PORT RELIEF VALVE



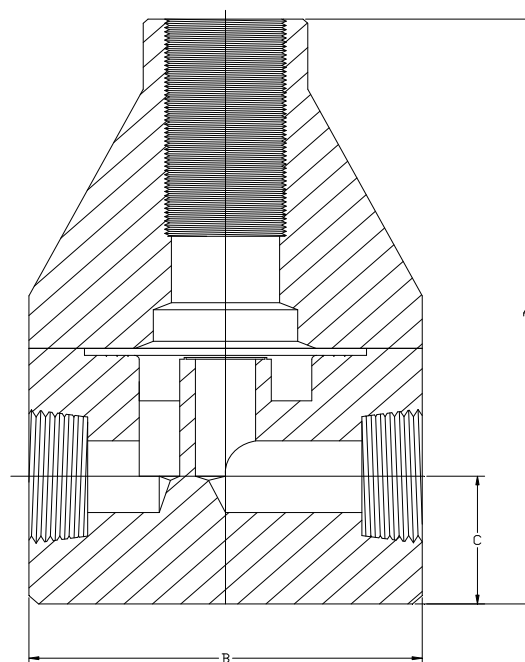
Technical Data:

Model PRHF Sizes: (DN)			15, 20, 25		
Connections:			ISO Thread, Socket, Union, & Flange		
Pressure Adjustment			Standard: 1–10 bar, Optional: 0–3.5 bar, 1–17 bar		
Flow Rates (Q) @ 10 bar			Shipping Weight: kgs		
Size	Pulsating	Continuous	Plastic	Metal / Plastic Top	Metal / Metal Top
DN 15	2271 l/h	6813 l/hr	1.6	2.7	3.2
DN 20	2271 l/h	6813 l/hr	1.6	2.7	3.2
DN 25	3785 l/h	12.26 m ³ /h	3.2	6.5	10.4
Max Temperature: (°C)			PVC: 60° ; CPVC & PP: 90°; PTFE, PVDF, & Metal: 150°, (Peak 200°)		
Max Operating Pressure (bar) @ 21° C			Plastic/Noryl: 25 bar		Metal/Metal: 135 bar
Materials of Construction:					
Diaphragm			PTFE / EPDM, Optional: Viton, Hypalon, & PTFE / Viton		
Valve Top			Standard: Noryl (DN15 – DN25); Optional: SS		
Valve Body			PVC, CPVC, PP, PTFE, PVDF, Halar, 316 SS, A 20, Hast. C		

Performance Curve:



Dimensions:



Product Codes For Ordering:

PRHF

1 2 3 4

1 = Size 2 = Material 3 = Spring Opt 4 = Options

050 – DN15 P - PVC 1 - 0 - 3.5 bar V - Viton Diaphragm
 075 – DN20 CP - CPVC 2 - 1 - 17 bar S - Socket Connection
 100 – DN25 PP - Polypro F - Flange Connection
 T - PTFE U - Union Connection
 K - PVDF B - BSP Connections
 H - Halar OSS - 316 SS Top
 S - 316 SS AR – Priming Valve
 A - Alloy 20
 C - Hastalloy C

DIMENSIONS: PRHF-SERIES			
All Materials			
Size	A (cm)	B (cm)	C (cm)
DN15	14.12	8.90	2.850
DN20	14.12	8.90	2.850
DN25	18.42	12.45	3.175

For more detailed information visit us at www.griffcovalve.com

Email: sales@griffcovalve.com